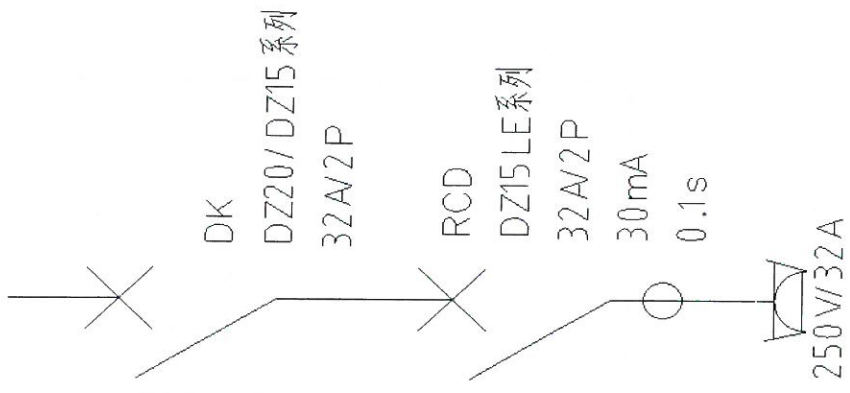
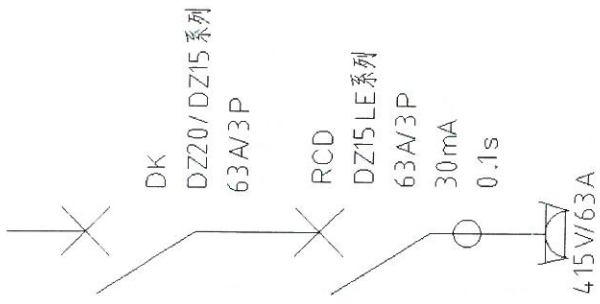


开关箱



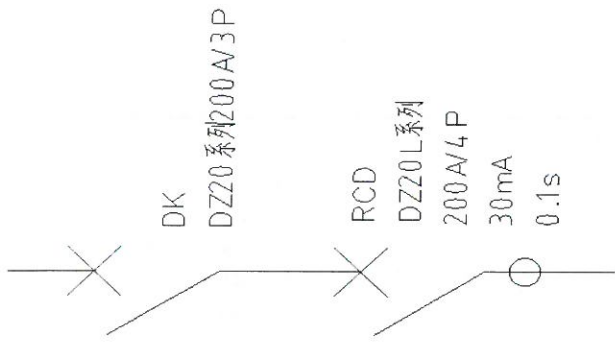
32A/2P (配PE端子排)

开关箱



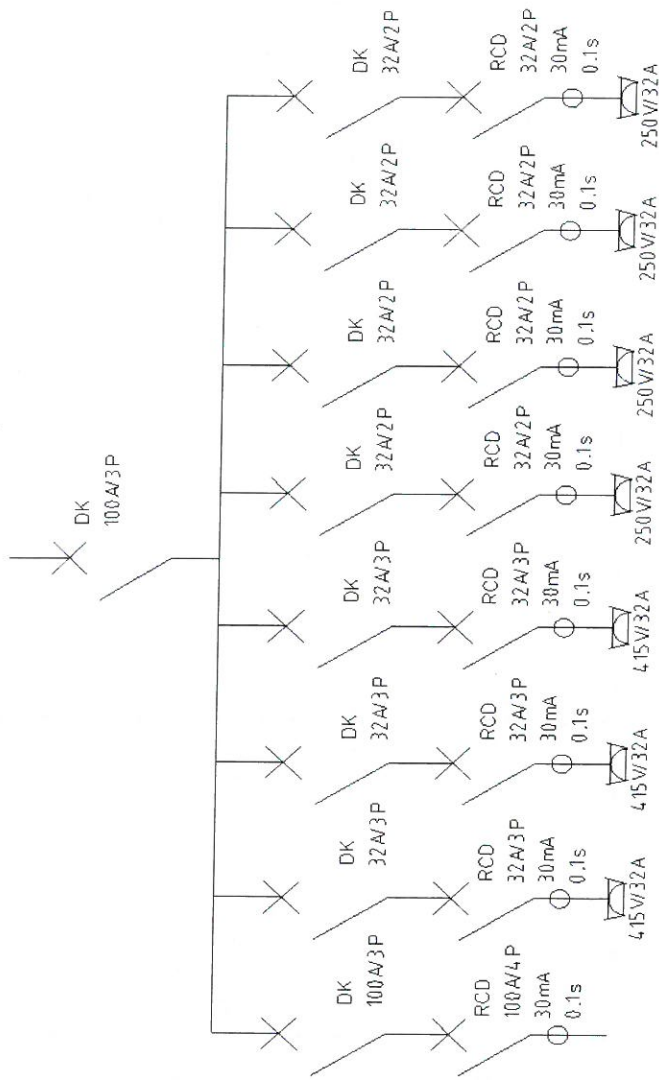
63A/3P (配PE端子排)

塔吊动力箱



塔吊动力箱

末级配电箱(4+4)

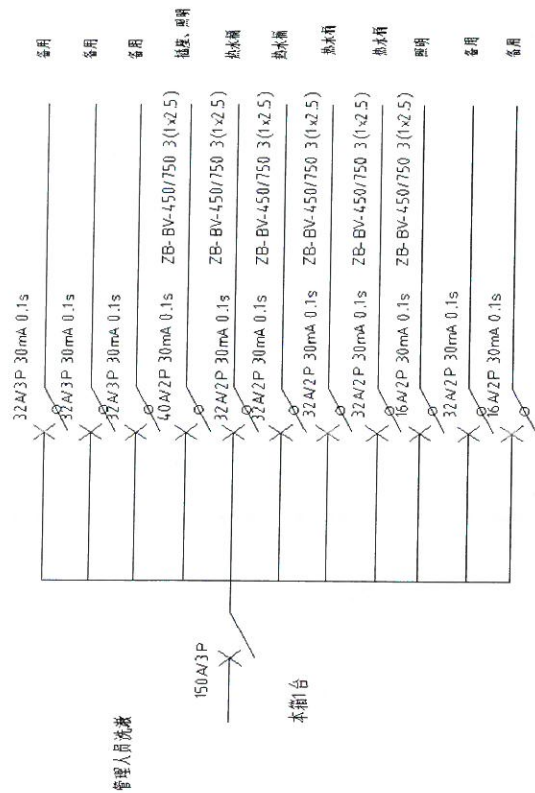


DK(断路器)选择DZ20/DZ15透明壳系列
 RCD(漏电断路器)选择DZ20/DZ15LE透明壳系列

工业插座于配电箱下方,配电箱内门

末级配电箱4+4
 (DK100A/3P)

室外挂箱

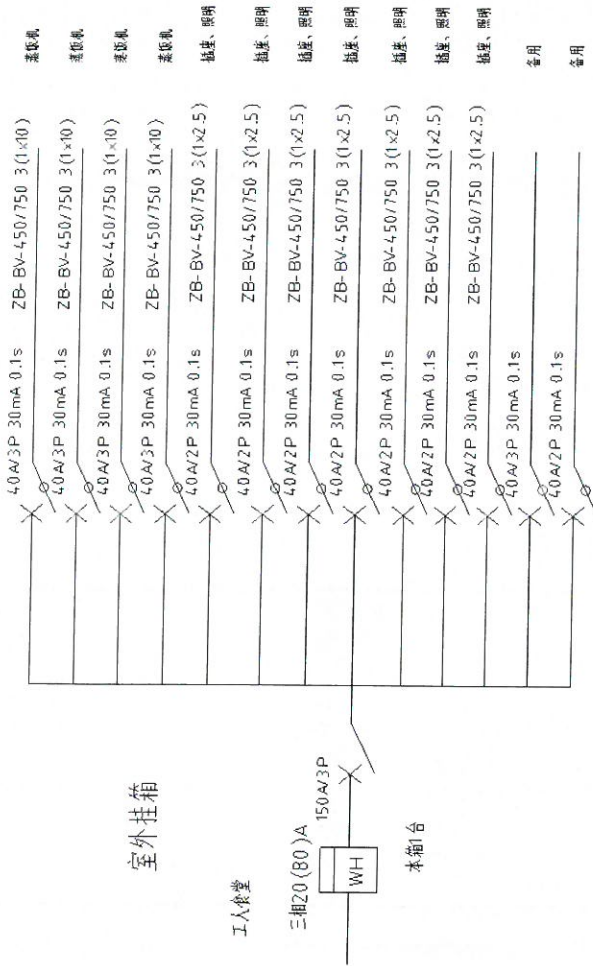


管理人员洗漱

说明1:漏电保护器都要选择DZ20系列漏电断路器(外壳透明可见断点的)

说明2:配电箱需要装设接地铜排和接零铜排,尺寸不小于25mm*3mm

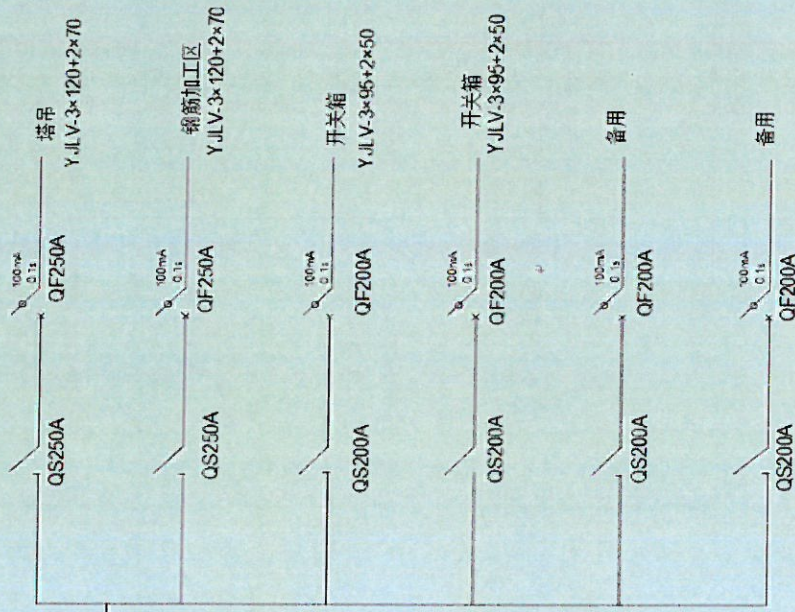
工人食堂



说明1:漏电保护器都要选择DZ20系列漏电断路器(外壳透明可见断点的)

说明2:配电箱需要设置接地铜排和接零铜排,尺寸不小于25mm*3mm

AL1-1~3 分配电箱系统图



QS-400A

YJLV3x240+2x120

N

PE

分页符

办公总配电箱 (AL1-3
二级配电箱)

